



Green-tree Subsoil

Often a large volume of material to be imported prior to the finished soil type, Green-tree Subsoil is used to build up levels and construct any specific landscape contouring requirements.

Green-tree Subsoil conforms to BS8601:2013, ensuring a consistent product of excellent quality.

The Green-tree team work closely with material suppliers throughout the country to source the highest quality, clean and consistent materials for supply into your project offering traceability throughout the supply chain.

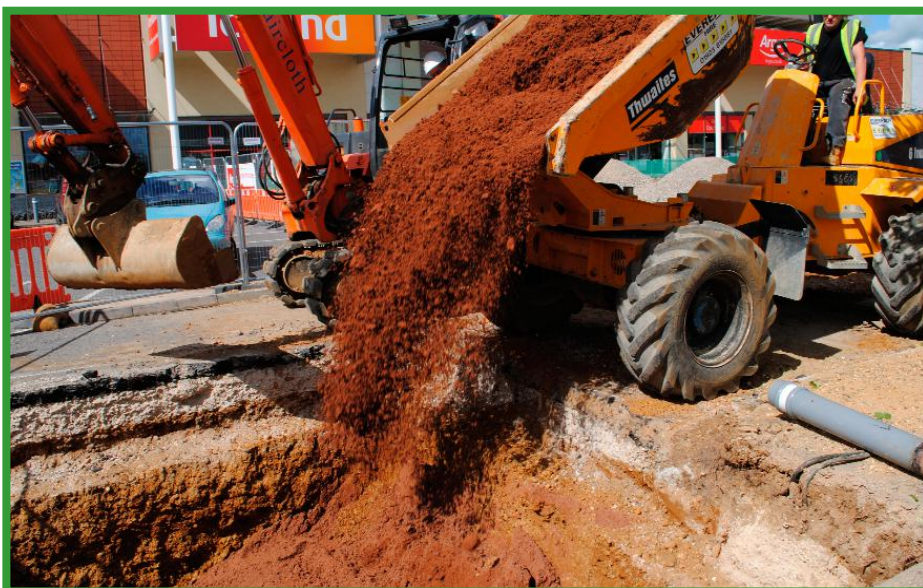
Example analysis of a Green-tree Subsoil*

Sample Reference	Accreditation	Result
Clay (0.002mm)	UKAS	10%
Silt (0.002-0.063mm)	UKAS	13%
Sand (0.063-2.0mm)	UKAS	77%
Texture Class (UK Classification)	UKAS	Sandy Loam
pH Value (1:2.5 water extract)	UKAS	8.3
Organic Matter (LOI)	UKAS	0.9%

*Contact your Sales Advisor for specific test data for your project.

Applications:

- Raise levels on site
- Create landscape contours
- General infill



Green-tree endeavour to ensure that the information given on this technical data sheet is accurate, but accept no liability for its use or suitability for particular application.

Rabbit Hill Business Park, Great North Road, Arkendale, Knaresborough HG5 0FF

T: 01423 332100 E: sales@green-tree.co.uk W: www.green-tree.co.uk Facebook: @greentechuk Twitter: @greentechltd